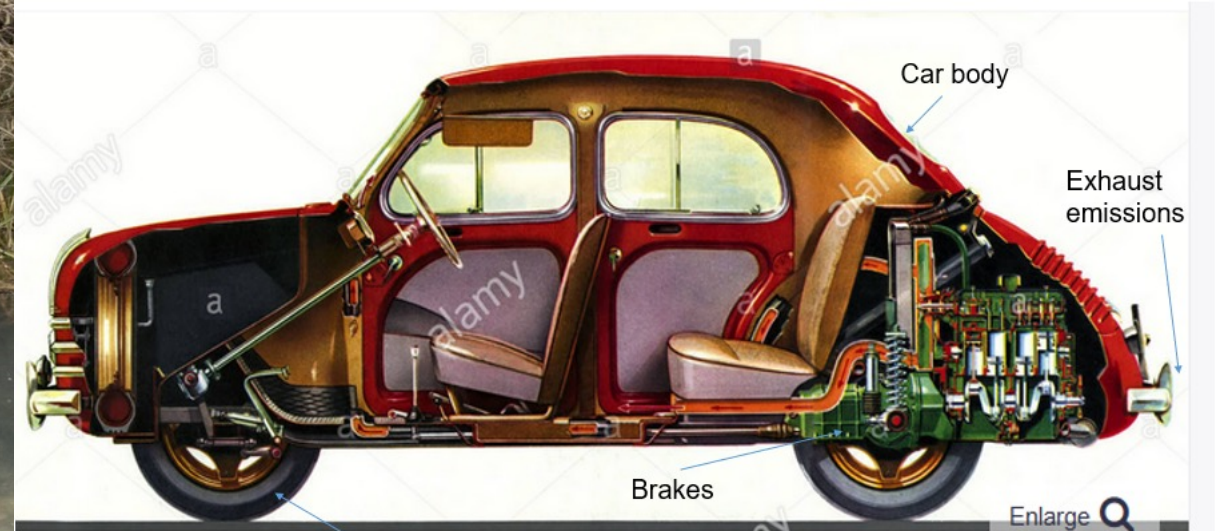




Pollution Remediation using NbS's

John Bryden – Head of Improving Rivers

Road Runoff Pollution



Not just the traffic: road markings, road materials, street furniture, accidental spills, construction erosion



British
Geological
Survey



Decision Support Tool for Pollution Solutions

[Road Pollution Solutions Tool \(bgs.ac.uk\)](https://mapapps.bgs.ac.uk/road-pollution-solutions/)

[//mapapps.bgs.ac.uk/road-pollution-solutions/](https://mapapps.bgs.ac.uk/road-pollution-solutions/)

Political Impact

Mayor of London, Sadiq Khan said: “This report provides clear evidence that pollution from the surface of London’s roads is posing a significant risk to our rivers. We’re working with partners to find solutions that prevent water contamination, but the Government must step up to provide the Environment Agency and highways authorities with the appropriate funding for these measures to properly protect the capital’s rivers.”

SUPPORTED BY

MAYOR OF LONDON



CaSTCo – Catchment Systems Thinking



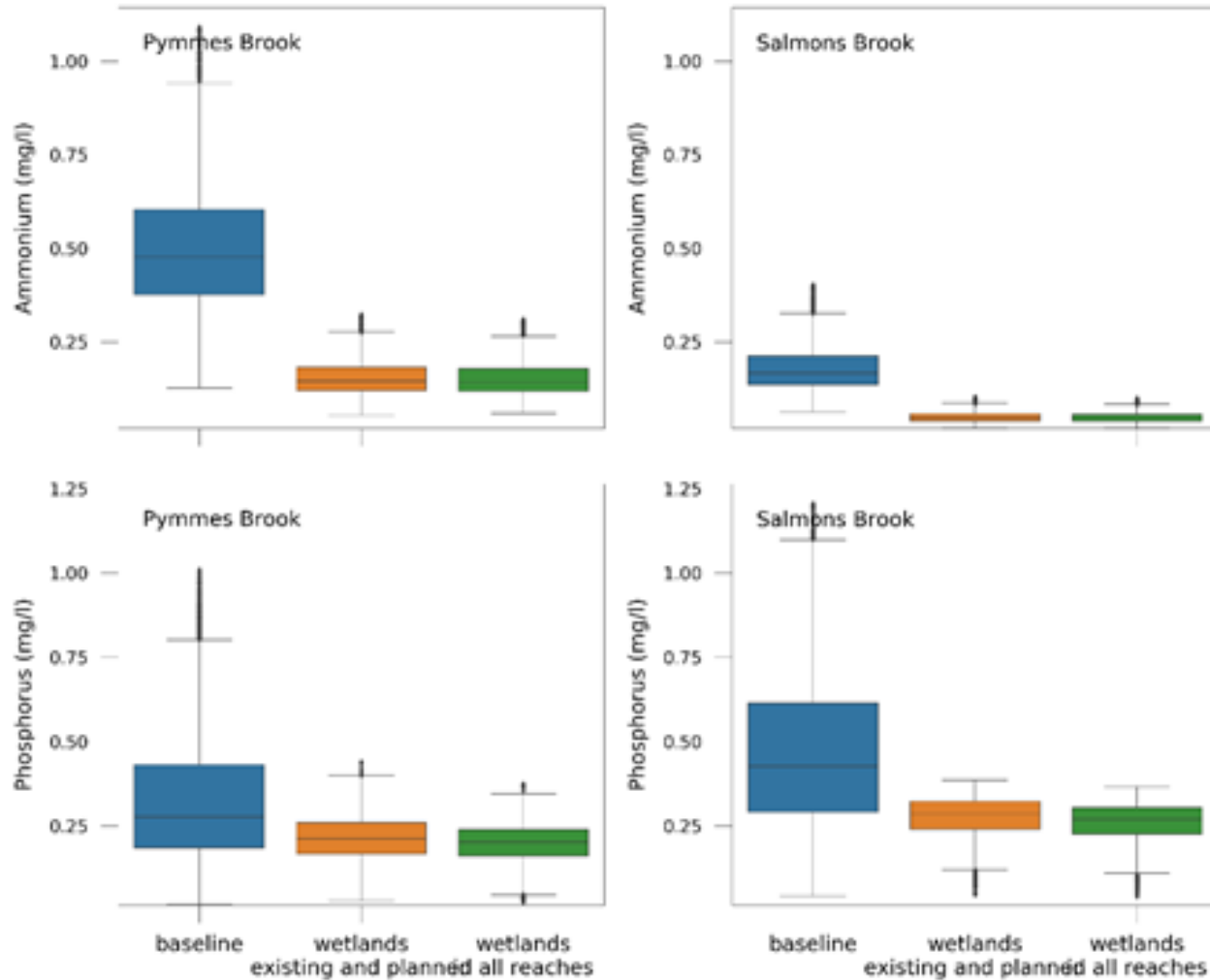
Creating a radical step-change in the contribution of Citizen Science & Community Monitoring to evidence-based Intergraded Catchment Management

Intention to develop cost-effective Citizen Science programmes and increase citizen engagement with the environment

Aims to lay foundations for a national Catchment Monitoring Cooperative to develop a coordinated and cost-effective environmental monitoring programme.



Constructed Wetlands – Water Quality Improvement at Catchment Scale

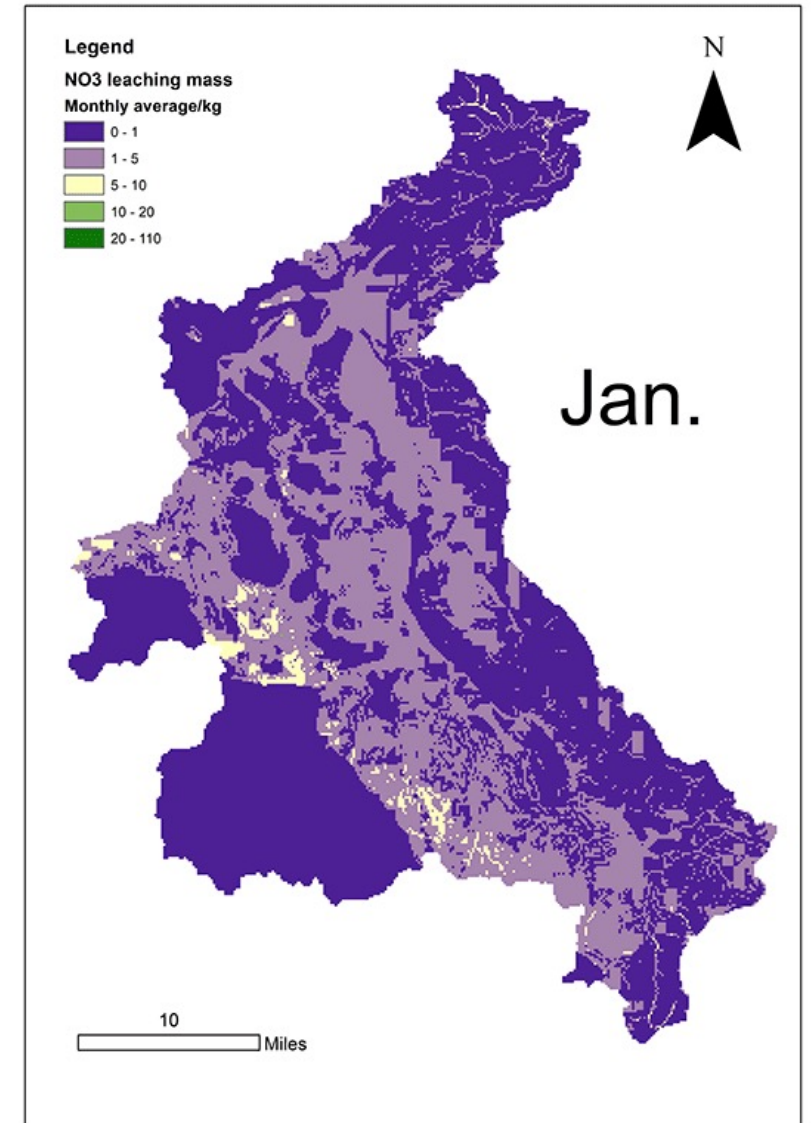
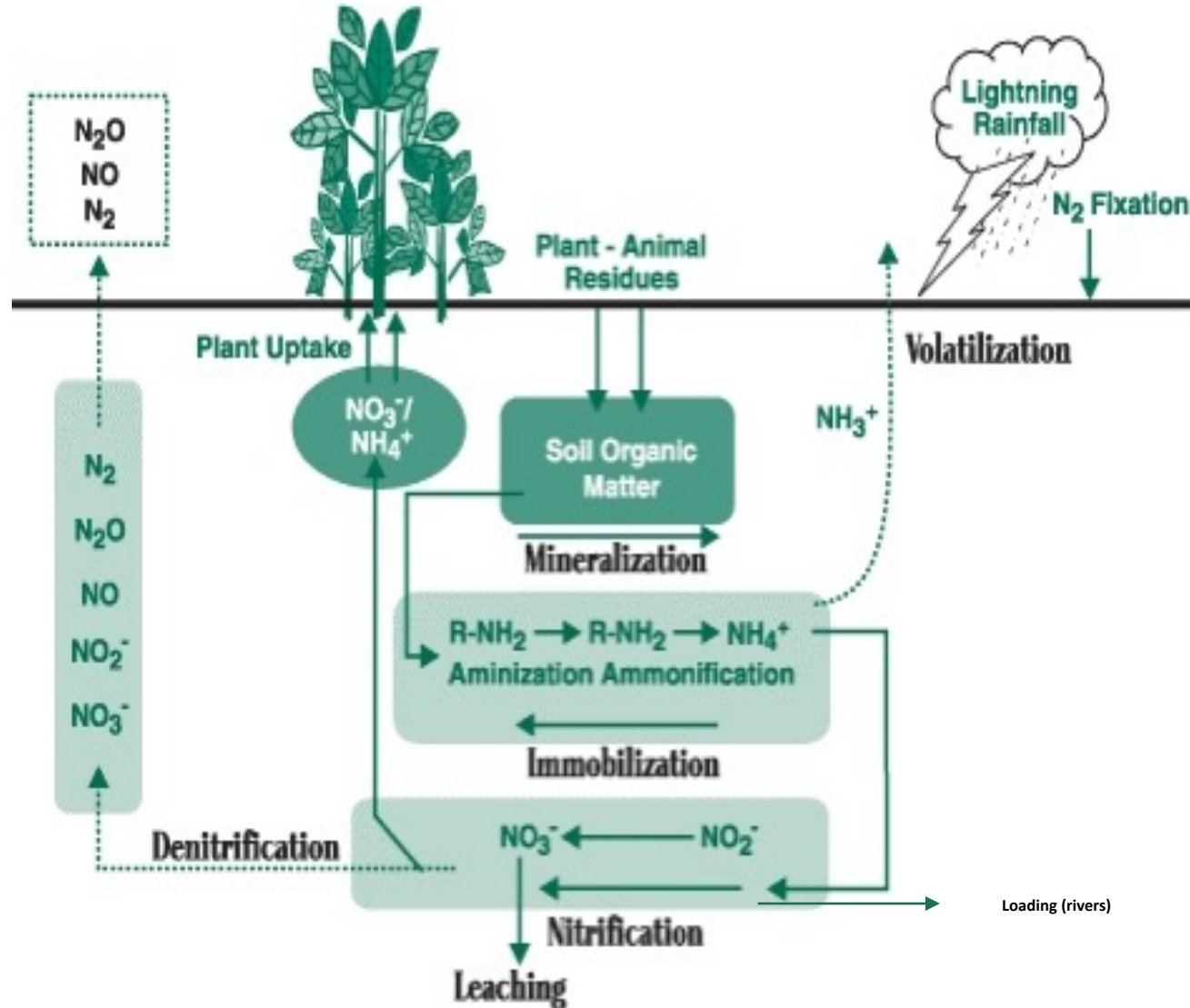


- Blue = Baseline conditions
- Orange = identified wetlands
- Green = wetlands everywhere

Predicting Agricultural Pollution Load



British Geological Survey



Governance – working with Farmers

Farm Cluster independently hosted by a local farmer for under a year.

- 30 Farms fully signed up member, covering 4.5k acres.
- Over 100 farms engaged in the cluster
- Meetings held on a range of topics – ponds, natural capital, hedge planting, invasive species control,

Impact –

- Secure 100ha's of woodland creation,
- Invasive species control programme
- Proposed Natural Capital Market to improve water quality and reduced flood risk



Private Sector funding Nature Based Solution



WATER STEWARDSHIP – *‘use of water that is socially and culturally equitable process that includes both site- and catchment-based actions.’* – Alliance for Water Stewardship



- GOOD WATER GOVERNANCE
- SUSTAINABLE WATER BALANCE
- GOOD WATER QUALITY STATUS
- IMPORTANT WATER-RELATED AREAS
- SAFE WATER, SANITATION AND HYGIENE FOR ALL (WASH)

Volumetric Water Benefit Accounting ('VWBA') is the global standardised method for assessing the benefits of water stewardship activities. Otherwise known as 'replenish'



Thank you!

